



## SafeViewER™ Imager Quick Start Guide

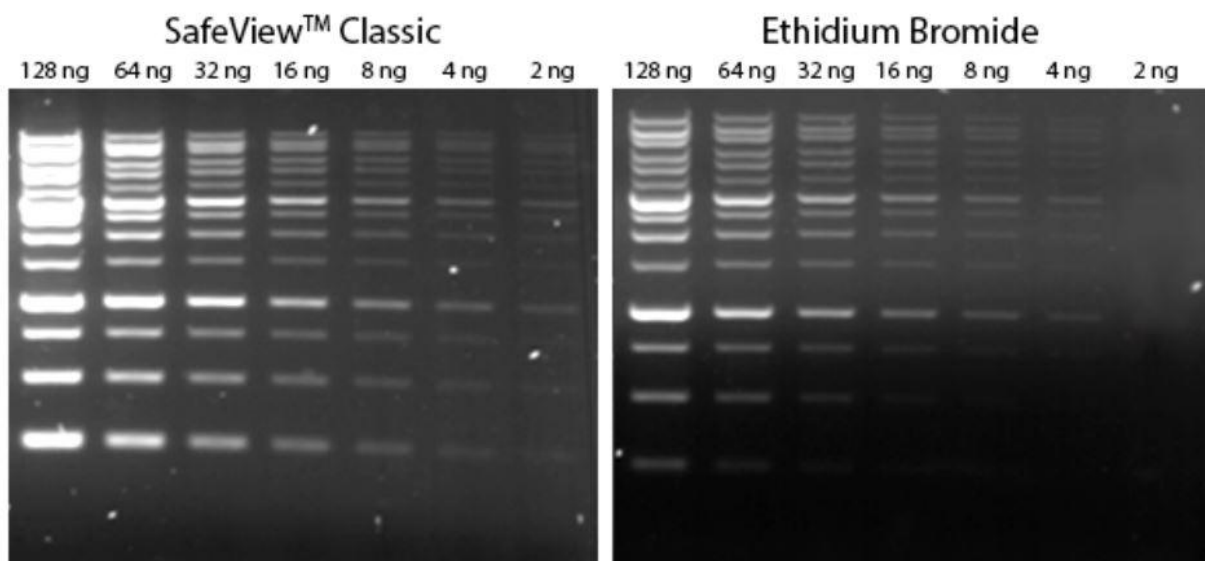
**Cat. No. E1001**

### Product Description

The SafeViewER™ Imager is a gel imaging device specifically designed for use with SafeView™ DNA Stains (Cat. No. G108, G108-G, G108-R and G680), which provides safer alternatives to the toxic chemical Ethidium Bromide by eliminating contamination risks. It is the most sensitive and environmentally friendly gel documentation system available. It protects the user in two ways: by using LED instead of harmful UV light and replacing Ethidium Bromide with carcinogen-free SafeView™ DNA Stains. This system ensures user safety and supports both gel documentation and sample preparation (gel-cutting) applications.

### Product Performance

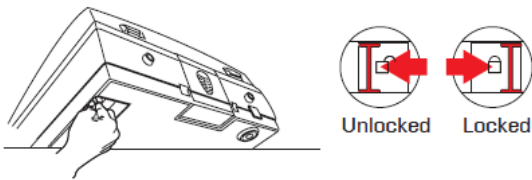
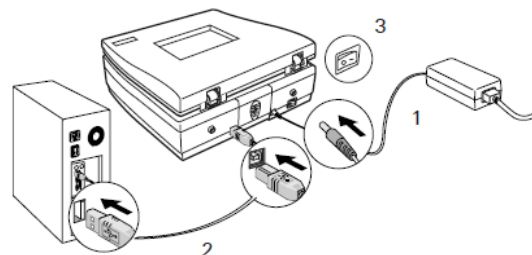
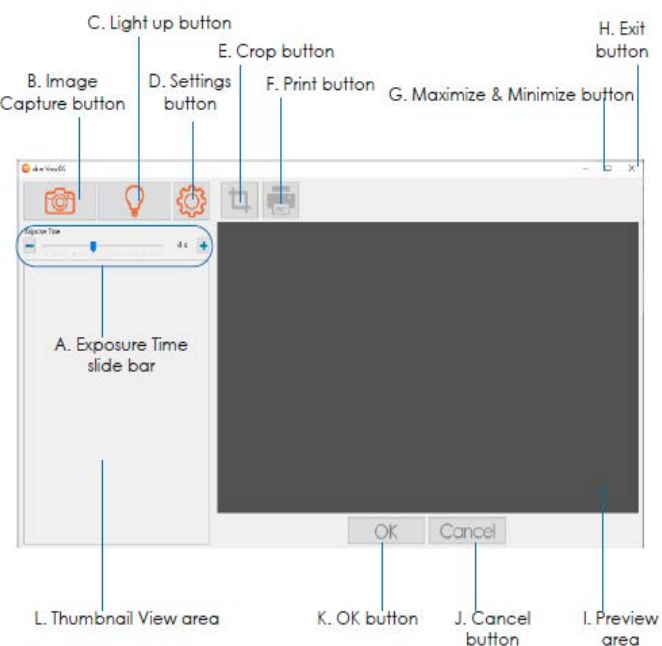
SafeView™ DNA Stain has greater sensitivity than Ethidium Bromide.



### Product Component

#	Product Component	
1	SafeViewER™ Imager	
2	Power Cord	
3	Filter Plate	
4	Power Adapter	
5	Hi-Speed USB Cable	
6	Software CD	

## Quick Setup Protocol

Steps	
<p><b>Step 1.</b> Install software using the Software CD or download from <a href="http://www.abmgood.com">www.abmgood.com</a>.</p> <p><b>Step 2.</b> Unlock the imager (in upright position) using the switch at the bottom right corner.</p>	
<p><b>Step 3.</b> Connect the SafeViewER™ Imager to the power supply and to your computer.</p> <p><b>Step 4.</b> Turn on the SafeViewER™ Imager power switch located at the back of the unit.</p>	
<p><b>Step 5.</b> Launch <b>abm's</b> ViewOS software to start imaging.</p> <p><b>Step 6.</b> Use the Control Panel on the ViewOS to capture, adjust exposure time, and save images.</p> <p>A: Exposure Time Slide Bar  B: Image Capture button  C: Light up button  D: Settings button  E: Crop button  F: Print button  G: Maximize &amp; Minimize button  H: Exit button  I: Preview area  J: Cancel button  K: OK button  L: Thumbnail View area</p>	

## General Notes

- Ensure the imager's lid is closed tightly; otherwise light may leak and generate poor imaging quality.
- Attach the Filter Plate to the inner side of the imager lid and use the Light Up Button for gel excision.
- Use the included cleaning cloth or a soft, non-abrasive and lint-free cloth to gently wipe the rear and front glass surface areas on the scanner's flatbed. Do not use any detergents, synthetic cleaning solutions, cleaning naphtha, or other solvents to clean the glass surface directly.

Refer to the User's Manual for detailed instructions. If there are any discrepancies between this quick guide and the User's Manual, the User's Manual will take precedence.